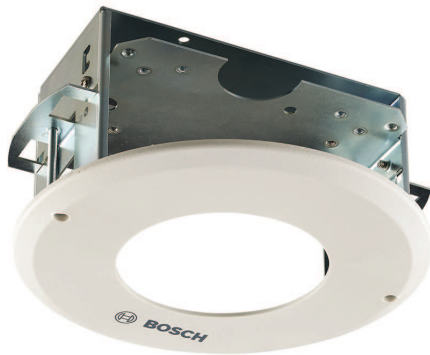


NDA-FMT-DOME Inceiling flush mount for dome camera



- ▶ Attractive appearance
- ▶ Easy installation
- ▶ Sturdy construction

This mount is suitable for installing dome cameras flush in a ceiling.

Functions

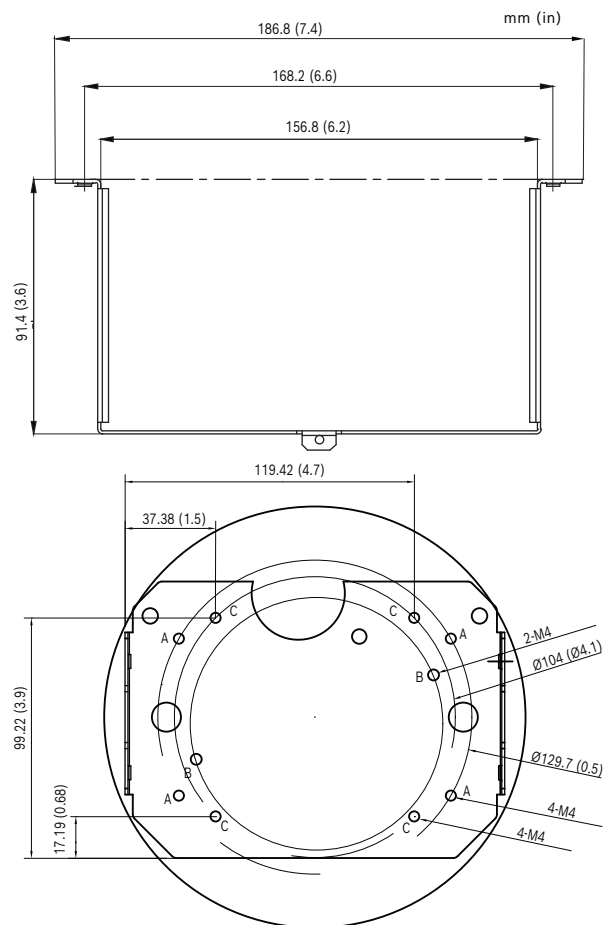
Modular design: use with different cameras

The modular design is flexible and can be used to install Bosch cameras both indoors and outdoors. By choosing the relevant camera specific interface plate for the camera to be installed, common mounts can be used, making multi-camera installations simpler and ensuring common form and color (RAL9003).

Installation/configuration notes

Notice

The cutout section to install this accessory must have a diameter of 176.5 mm.



Parts included

Quantity	Component
1	In-ceiling mount
2	Trim plates
1	Quick install instructions
1	Accessory bag containing mounting components

Technical specifications

Mechanical

Dimension (Ø x H) (mm)	186.8 mm x 91.4 mm
Dimension (Ø x H) (in)	7.35 in x 3.6 in
Cutout section for installation (Ø) (mm)	176.5 mm
Cutout section for installation (Ø) (in)	6.95 in
Mounting type	Ceiling-mounted
Material	Mount: Metal SECC
Material	Trim ring: PC/ABS
Color in RAL	RAL 9003 Signal white

Ordering information

NDA-FMT-DOME Inceiling flush mount for dome camera

In-ceiling flush mounting kit for dome cameras (Ø157 mm)

Order number **NDA-FMT-DOME | F.01U.303.768**

Represented by:

Europe, Middle East, Africa:
Bosch Security Systems B.V.
P.O. Box 80002
5600 JB Eindhoven, The Netherlands
Phone: + 31 40 2577 284
www.boschsecurity.com/xc/en/contact/
www.boschsecurity.com

Germany:
Bosch Sicherheitssysteme GmbH
Robert-Bosch-Ring 5
85630 Grasbrunn
Tel.: +49 (0)89 6290 0
Fax: +49 (0)89 6290 1020
de.securitysystems@bosch.com
www.boschsecurity.com

North America:
Bosch Security Systems, LLC
130 Perinton Parkway
Fairport, New York, 14450, USA
Phone: +1 800 289 0096
Fax: +1 585 223 9180
onlinehelp@us.bosch.com
www.boschsecurity.com

Asia-Pacific:
Robert Bosch (SEA) Pte Ltd, Security Systems
11 Bishan Street 21
Singapore 573943
Phone: +65 6571 2808
Fax: +65 6571 2699
www.boschsecurity.com/xc/en/contact/
www.boschsecurity.com